

HEALTH & SAFETY

>> OCCUPATIONAL SAFETY

PROCESS SAFETY

SAFETY TRAINING

OCCUPATIONAL MEDICINE

MEASURING STATION FOR HAZARDOUS SUBSTANCES

CONSULTING AND EXPERT OPINIONS

MACHINERY SAFETY

Give us a call!
+49 69 305-7777
 Monday – Friday: 8 am – 5 pm

Infraser serv GmbH & Co. Höchst KG
 Industriepark Höchst
 65926 Frankfurt am Main

Email: vertrieb@infraser serv.com
www.infraser serv.com



www.infraser serv.com/health-and-safety



SAFE OPERATION

Manufacturers are responsible for machinery being safely designed, operators for it being safely operated, according to the Machinery Directive (2006/42/EC) and the German Industrial Safety Regulation (BetrSichV). Manufacturers and operators should be familiar with these regulations – but sometimes are not. For example, operators who modify/convert machinery are treated as manufacturers! If you want to find out what the requirements of both regulations are and how to comply with them, Infraser serv Höchst would be happy to help.

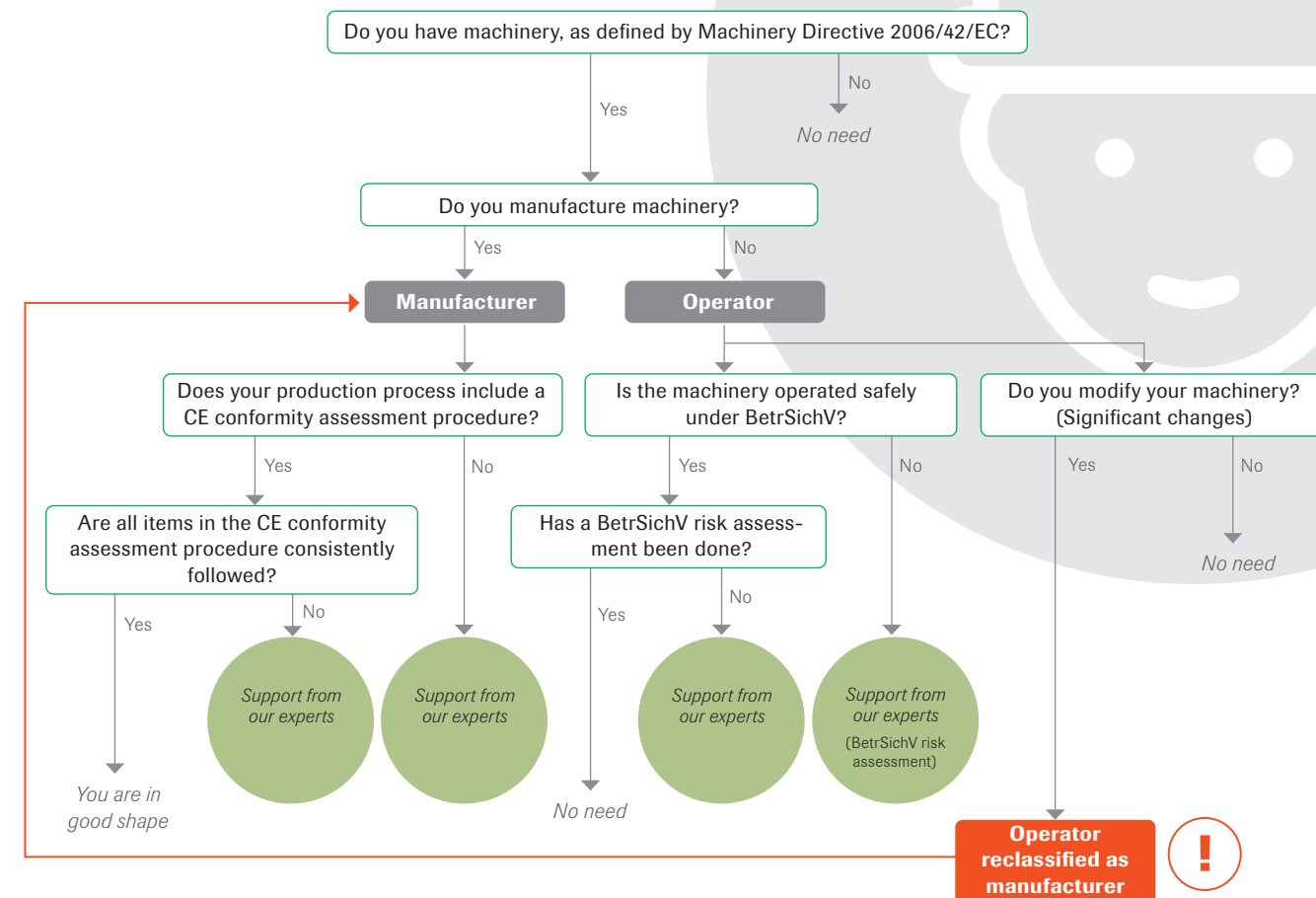
ADVICE FROM EXPERIENCED EXPERTS

Manufacturers use CE markings to certify that their products are safely designed. However, operators assume full manufacturer responsibilities if they make substantial changes, link together several machines with a shared control system into an integral whole or buy either used non-CE-compliant machinery built before 1995 or new machinery from outside the European Economic Area. Infracerv Höchst will assist you with the expertise needed to verify and ensure the CE conformity of your machinery and equipment.

In industrial settings, these changes are often made to filling and packing machines. Our experts have seen almost every scenario throughout their extensive consulting careers and know exactly what aspects to consider during an assessment and where to look for possible weak points. By following a standardized procedure, they can thoroughly evaluate the functionality of all the components and their interactions.

Our consulting services span the full lifecycle of machinery and equipment – from transportation to installation, commissioning, set-up and conversion to cleaning and maintenance all the way to decommissioning, disassembly and disposal. We provide preventive consulting, conduct job hazard analyses and risk assessments, evaluate interfaces, recommend action and prepare technical documentation. When we are finished, you will have an actionable guide to complying with the European Machinery Directive (2006/42/EC).

ARE YOU A MANUFACTURER OR OPERATOR?
OUR EXPERTS WILL SUPPORT YOU



OUR SERVICE PORTFOLIO IN DETAIL

Workplace risk assessments based on

- Selection of machinery that meets occupational safety requirements
- Suitability assessment for the conditions at the workstation
- Guidance on ways to ensure health and safety by using machinery as intended
- Education about laws, regulations and construction requirements

Definition of occupational safety measures for

- Minimizing residual risks for the machinery's entire service life
- Ergonomically designing workstations and workflows
- Optimizing the work environment (air-conditioning, lighting, noise control, accessibility)
- Preparing operating manuals and safe work practices for specific activities
- Selecting personal protective equipment

Definition of the machinery inspection

- Type, scope, deadlines
- Inspector's qualifications
- Form of inspection certificate

OUR SERVICE PROMISE

WE WILL HELP YOU

- Satisfy fundamental health and safety requirements
- Compile the technical documentation
- Prepare operating manuals
- Identify and validate safety components pursuant to DIN EN ISO 13849-1 (performance level)
- With the conformity declaration and CE marking
- Prepare the declaration of incorporation

YOUR BENEFITS:

- Focus on your core business
- Avoid costs caused by accidents
- Obtain sound advice from knowledgeable, experienced practitioners
- Receive guidance on regulatory compliance